

# Installing SimMine

# 1

## Overview

The installation of SimMine package is done through a setup program. SimMine requires some other components to exist in the Windows operating system before the installation can be done. These requirements do only need to be installed once.

---

## SimMine requirements

SimMine requirements are components that should be installed before the SimMine install commences. The requirements are only needed to install once. When new versions of SimMine are published, only SimMine itself needs to be downloaded and installed.

The requirements can be downloaded in a separate file from <http://www.simmine.com/assets/documents/requirements.zip>.

In the requirements, 2 components are found:

- Microsoft Access database engine. The Microsoft database access driver must be the same bit-version as the installed office version. For example, if Microsoft office 64-bit is installed, the 64-bit of the access database engine must be installed. If no Microsoft office exist on the computer, any version can be installed.
- For SimMine full version (that version requires a hardware lock), the HASP Run-time environment must be installed. For trial version and student version, there is no need to install the HASP Run-time.

## Installing the Microsoft Access database engine

It exist 2 versions of this, a 32bit version and a 64bit version. The 32bit version is named "AccessDatabaseEngine.exe", while the 64bit version is named "AccessDatabaseEngine\_X64.exe". Install the one that fits your computer (see above)

## Installing the HASP RunTime environment

The HASP RunTime environment is only necessary for computers that shall run the full version of SimMine. For student versions and trial versions, this is not necessary to install. When installing, please have your hardware key unplugged. When the installation ends, the key can be reinserted.

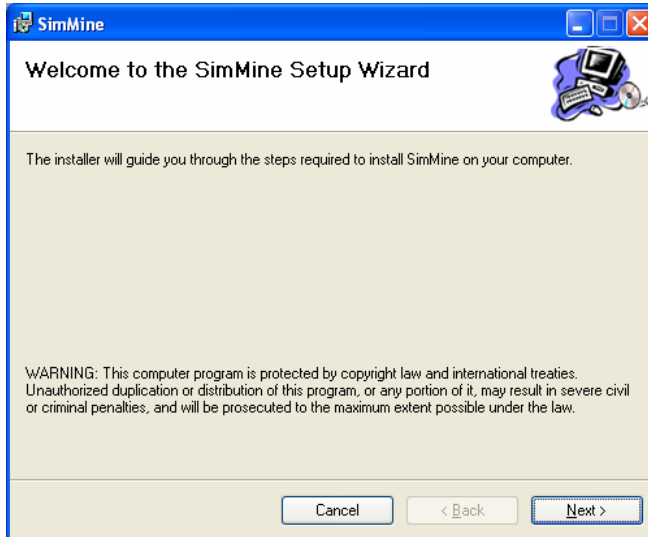
The HASP RunTime install is found in the Sentinel\_HASP\_Run-time\_setup folder. Run the HASPUserSetup.exe to start the installation. Follow the instructions on screen.

---

## Installing the SimMine development package

This section refers to the installation steps when installing SimMine development package software.

Start the setup program by double-clicking the setup file (Setup.exe). This will start the installation wizard. The first screen is shown below:



**Figure 1-1 - Installation step 1**  
Click next to continue



**Figure 1-2 - Installation step 2 license agreement**

## Section one

This step shows the license agreement. You have to accept the license before you can continue with the installation.

Click “I Agree” to agree to the license and then click Next.



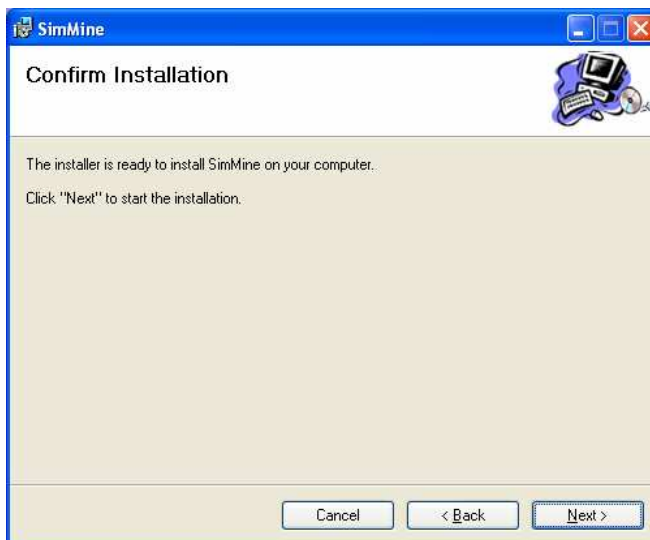
**Figure 1-3 - Installation step 3 installation folder**

Select where to install SimMine. Use the “Browse” button to browse for a location.

When done, click ”Next”.

Select for which users the SimMine program will be installed for. “Everyone” creates an installation that is visible for everyone. “Just me”, installs it so it’s only visible for the currently logged in user.

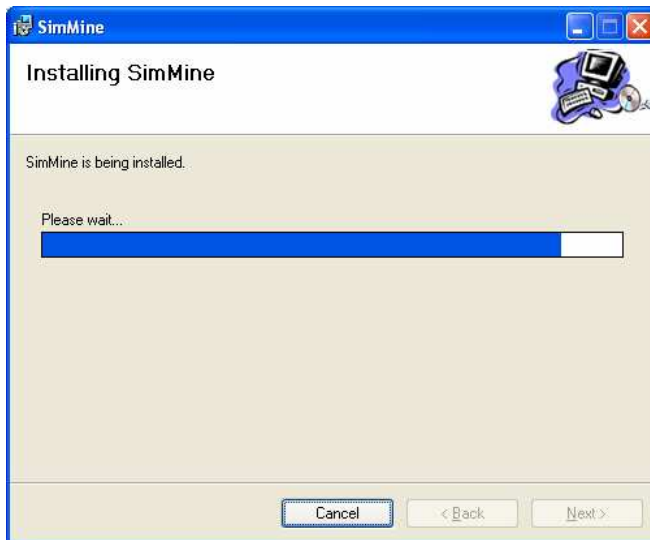
Click next when done.



**Figure 1-4 - Installation step 4**

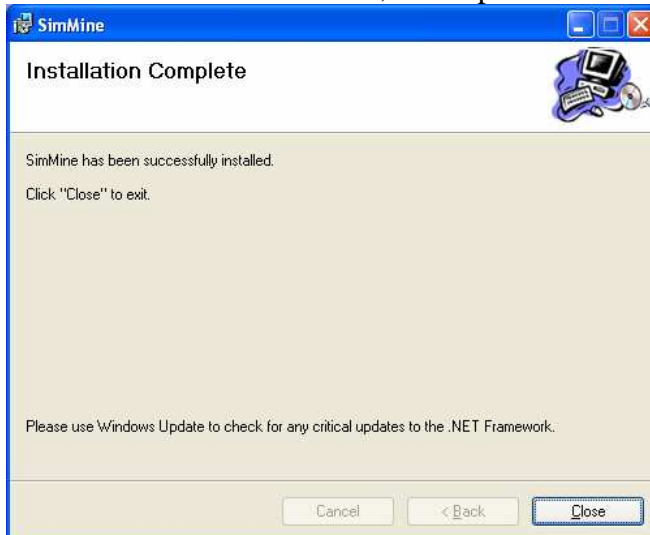
Confirm the installation. Click next when you want to start the installation

## Section one



**Figure 1-5 - Installation in progress**

When the installation is done, the step below is seen.



**Figure 1-6 - Last installation step**

Click close to close the installation wizard.

**Note!** For windows Vista and Windows 7 users, some additional steps must be made depending on your version..

Vista and Window 7 users:

- For 64-bit version of the operating system, the aero interface should be enabled. This is due to that SimMine 32-bit version uses OpenGL 32-bit, which can be emulated by the aero functionality. If Aero isn't enabled, a 32-bit driver for OpenGL cannot be found, which means that SimMine cannot show any graphics. For 32-bit versions of the operating system, or if you have installed the 64-bit version of SimMine, it doesn't matter if Aero is enabled or disabled.
- Open Windows explorer and go to the installation folder for SimMine (normally c:\program files\simmine). Give yourself modify rights to this folder. Otherwise the database cannot be changed.

The installation is now complete.

## Section one

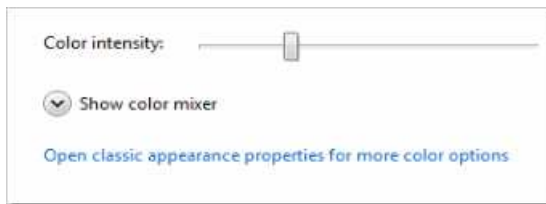
The SimMine program is now found in the start menu, under “All programs->SimMine” folder.

# Enabling Aero on Windows Vista

You might have some performance reasons for disabling it... but it is recommended to enable it for 64-bit operating systems. To enable it, just right-click on the desktop and choose Personalize. Click the “Window Color and Appearance” link:



Then in the next screen, click the link near the bottom for “Open classic appearance properties for more color options”

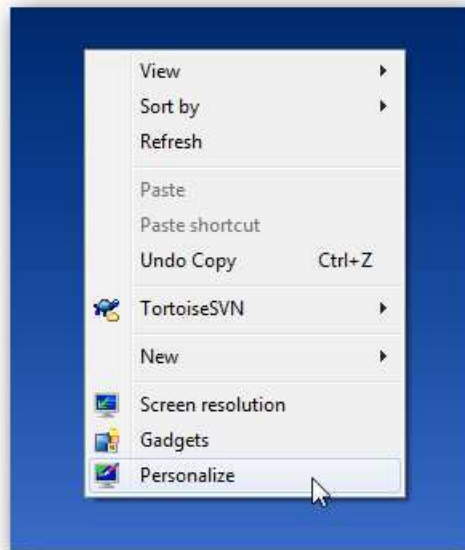


Now you should be able to enable Aero altogether by choosing Windows Aero in this screen:



## Enabling Aero for Windows 7

First, right-click on the desktop and choose Personalize from the menu.



Then you can simply scroll the themes down until you see the Aero themes. Select any of the Aero theme that you want to enable.

